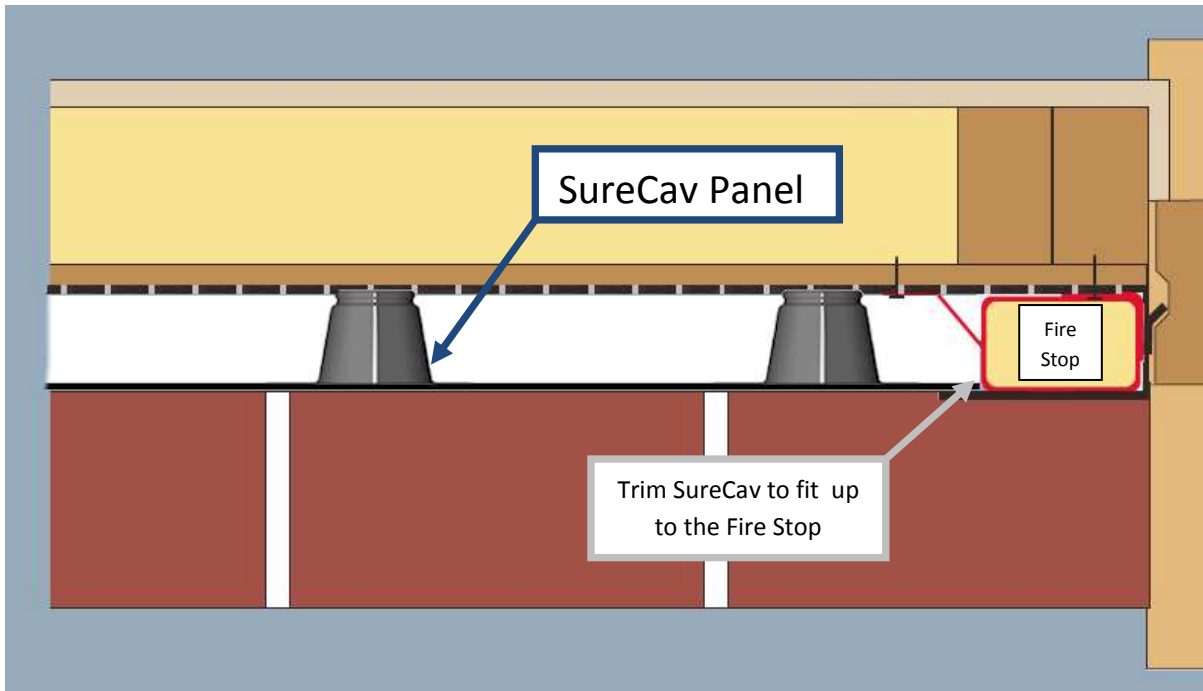




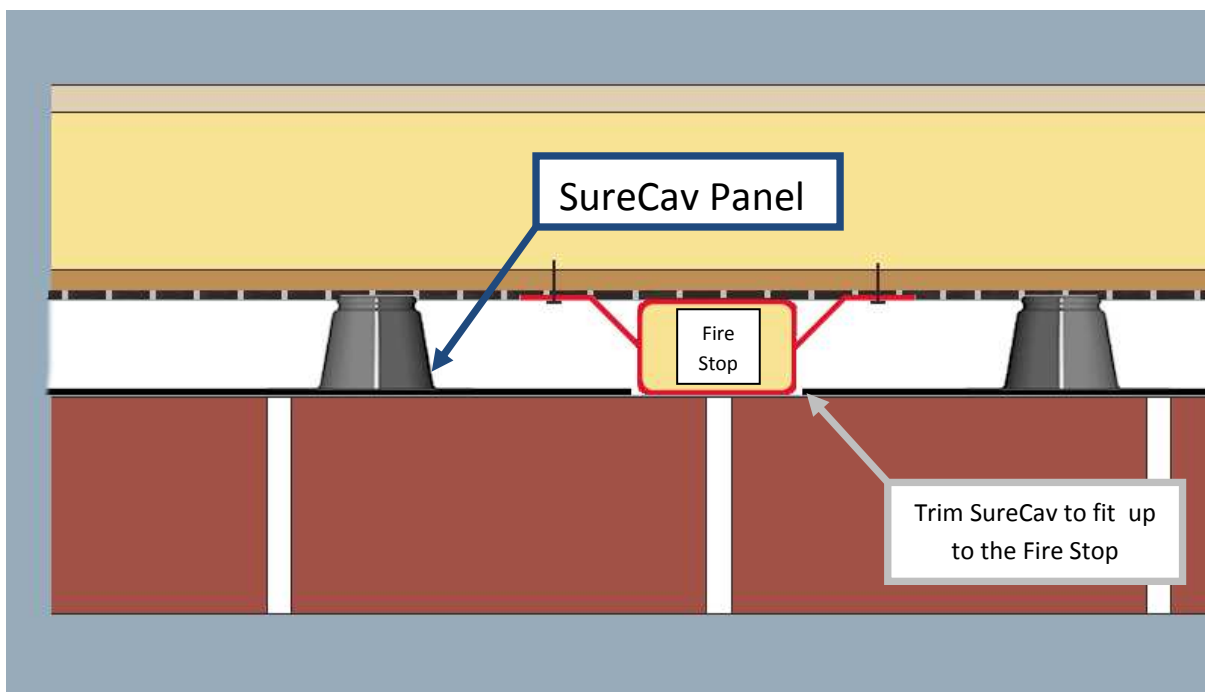
Fitting SureCav with Fire Stop or Fire Sock in Timber Frame Buildings

1. When Fire Stop is fitted against a door or a window jamb:



Cut the SureCav panel to allow for fitting to the fire stop barrier.

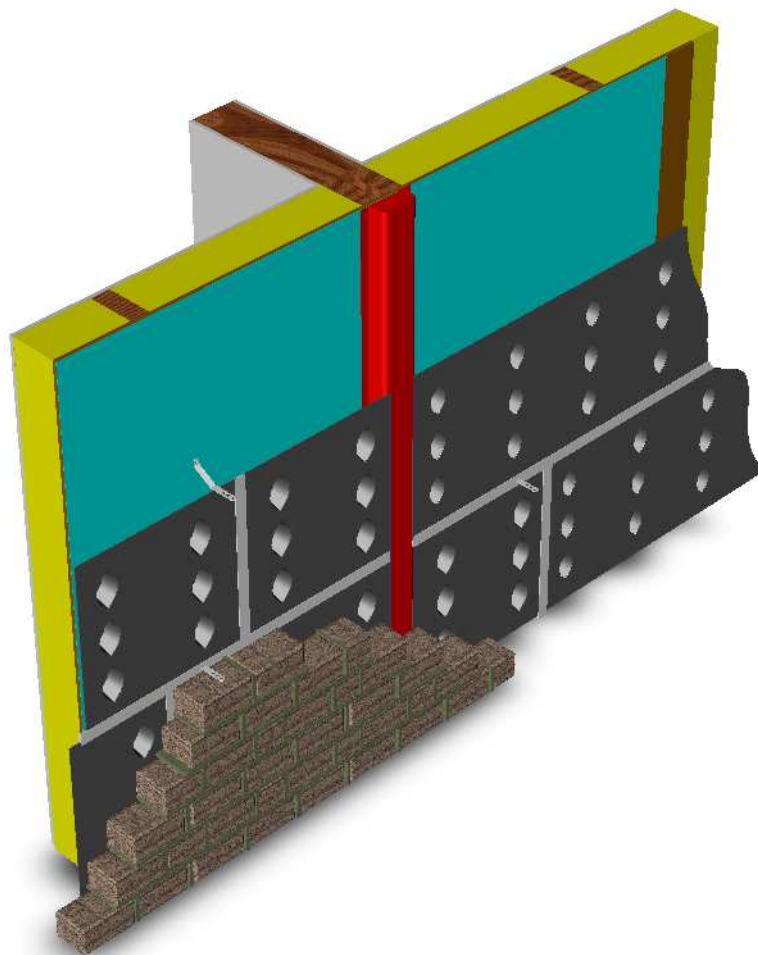
2. When Fire Stop is fitted vertically at required intervals or at junction of internal wall or party wall, simply trim SureCav to the barrier:



Please note that in timber frame dwellings, cavity barriers and fire stops are required to prevent the spread of fire through walls, floors and cavities. To meet the minimum standard and regulations, two storey dwellings and above require cavities to be closed by cavity barriers at specified intervals to meet the specific building regulations.

Sufficient allowance should also be made for trimming SureCav to horizontal cavity fire barriers at floor levels and at roof plate level.

The image below shows a typical vertical fire stop at the junction of an internal wall. Note that the SureCav panels have been trimmed up to the fire barrier material.



SureCav Limited

Tel: 01963 34660 **Fax:** 01963 33700

E-mail: info@surecav.com